

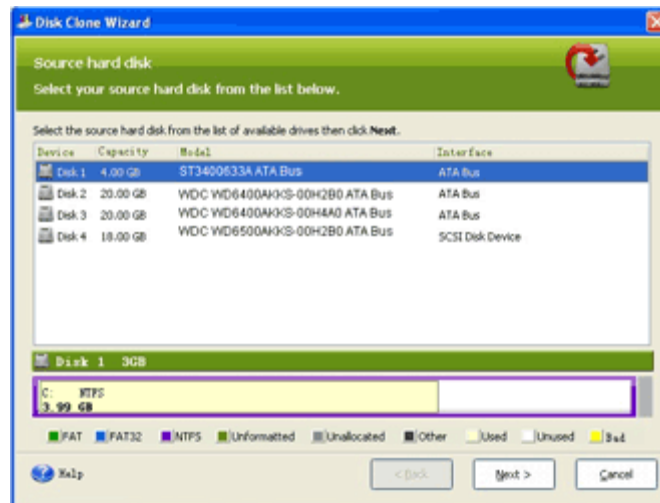
How to clone disk with EASEUS Todo Backup?

Please follow the detailed step-by-step instruction to clone disk as follows. Before that you may download and install a full version of this freeware and then follow us.

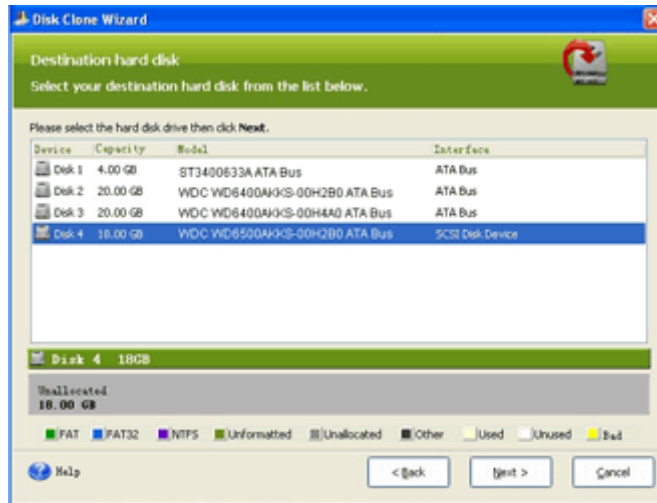
1. Launch the software and locate the "Clone Disk" in the main board or toolbar.



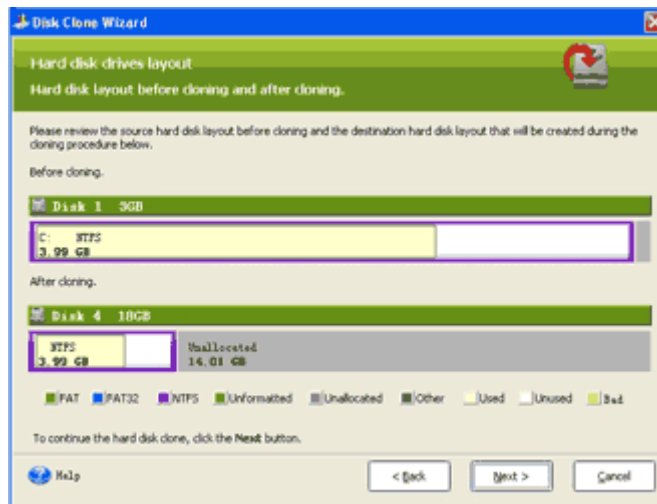
2. Select the disk that you want to clone. Here we choose Disk 1. Click "Next". (You will see the detailed layout of disk 1 at the bottom of the interface.)



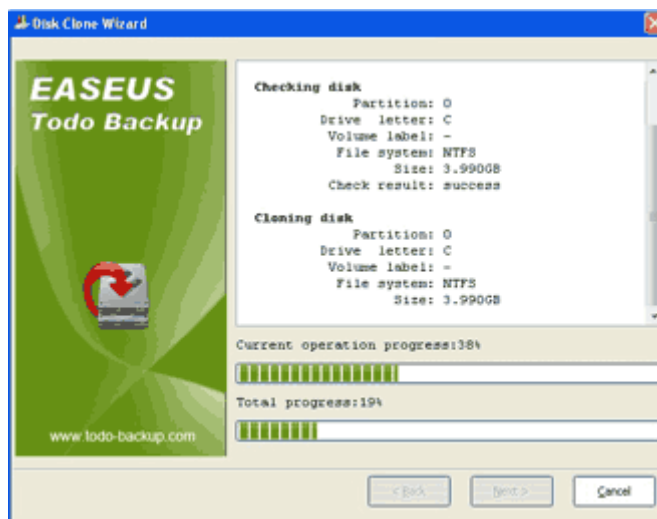
3. Select a destination disk. Here we choose Disk 4, an unallocated disk. Click "Next". You must know that all data and programs on the destination disk will be overwritten during the disk clone process.



4. Preview your source disk and destination disk after cloning. Click "Next".



5. It will show the process.



6. Click OK and you may check the cloned disk in the Disk Management.

Disk 0 Basic 8.00 GB Online	test1 (E) 2.23 GB NTFS Healthy	test2 (F) 2.41 GB NTFS Healthy	3.36 GB Unallocated
Disk 1 Basic 2.00 GB Online	test1 (G) 515 MB NTFS Healthy	test2 (H) 514 MB NTFS Healthy	TEST3 (M) 506 MB FAT32 Healthy
Disk 2 Basic 8.00 GB Online	8.00 GB Unallocated		
Disk 3 Basic 10.00 GB Online	(C) 4.31 GB NTFS Healthy (System)	(H) 5.68 GB NTFS Healthy	
Disk 4 Basic 8.00 GB Online	test1 (J) 2.23 GB NTFS Healthy	test2 (K) 2.41 GB NTFS Healthy	3.36 GB Unallocated
CD-ROM 0 CD-ROM (D:)	No Media		

Tips:

1. If the source disk contains the system partition, please shut down the computer after clone.
2. To make the computer boot normally, if the source disk contains boot partition, you need to remove either the source disk or destination disk from the computer. If you want to boot from the destination disk, we recommend you to replace the source disk with the destination disk. You'd better disconnect the destination hard disk and boot from the source disk, or replace the source disk with the destination one to boot.
3. If the computer fails to boot from the destination disk after clone, we suggest you clone the source disk to another disk with the same HDD interface.
4. Boot LINUX version from CD-ROM with USB interface is not supported currently.
5. If you choose to clone a hidden partition, the cloned one is unhidden.
6. If the temporary file path is the disk that you want to clone to, sector-by-sector clone cannot be achieved until the path is changed to another disk in the Option menu.